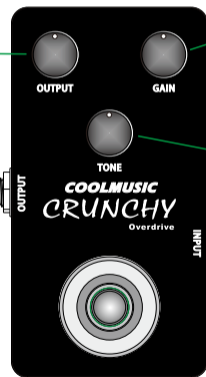


POWER: This jack should use a 9V effect adapter (internal negative external positive) to power the effect.

OUTPUT: This knob is used to adjust the volume of the overdrive effect. When the effect device is in working mode, you can increase or decrease the output volume through the knob.

OUTPUT: Connect your amplifier using a 1/4" phone jack here.



GAIN: This knob is used to adjust the overdrive effect gain of the overdrive effect and maintain the tone of the original input signal.

TONE: This knob controls the tone of the output signal. Turn clockwise to increase treble, and turn counterclockwise to decrease treble.

INPUT: Connect your instrument using a 1/4" phone jack here.

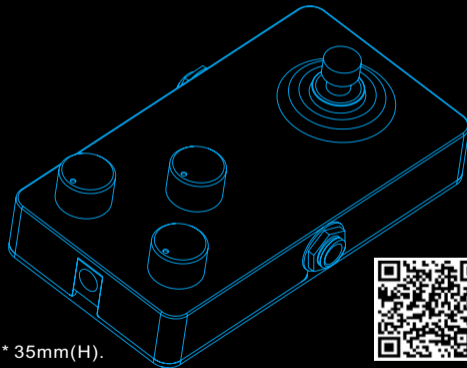
Guitar Effects Pedal Manual

CRUNCHY Overdrive

Weight: 200g (Bare metal).

Dimension: 115mm(L) * 66mm(W) * 35mm(H).

COOLMUSIC



www.coolmusic-tech.com