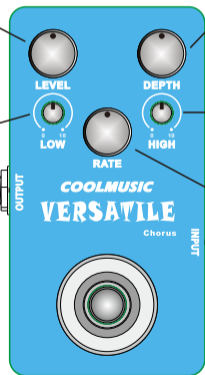


POWER: This jack should use a 9V effect adapter (internal negative external positive) to power the effect

LEVEL: This knob is used to adjust the intensity of the chorus effect. Turning it clockwise can increase the effect intensity, and turning it counterclockwise can reduce or turn off the effect intensity.

LOW: This knob controls the boost or attenuation of the low frequency signal of the effector.

OUTPUT: Connect your amplifier using a 1/4" phone jack here.



DEPTH: This knob is used to adjust the chorus depth of the effect.

HIGH: This knob controls the boost or attenuation of the high frequency signal of the effector.

RATE: This knob is used to adjust the chorus rate of the effect.

INPUT: Connect your instrument using a 1/4" phone jack here.

Guitar Effects Pedal Manual

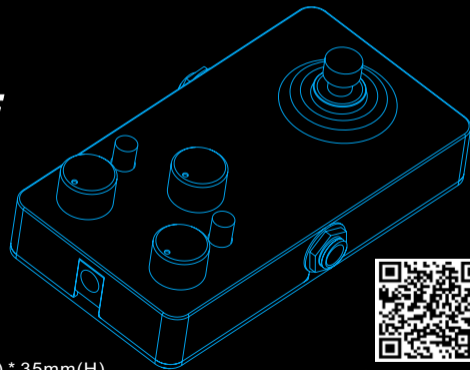
VERSATILE

Chorus

Weight: 200g (Bare metal).

Dimension: 115mm(L) * 66mm(W) * 35mm(H).

COOLMUSIC



www.coolmusic-tech.com