

POWER: This jack should use a 9V effect adapter (internal negative external positive) to power the effect

LEVEL: This knob is used to adjust the volume of the effect sound, and the corresponding effect volume can be adjusted by the knob.

LOW: This knob controls the boost or attenuation of the low frequency signal of the effector.

OUTPUT: Connect your amplifier using a 1/4" phone jack here.



GAIN: This knob is used to adjust the distortion gain of the effect and keep the tone of the guitar.

FAT: This knob controls the boost or attenuation of the mid frequency signal of the effector.

TONE: This knob controls the tone of the output signal. Turn clockwise to increase treble, and turn counterclockwise to decrease treble.

INPUT: Connect your instrument using a 1/4" phone jack here.

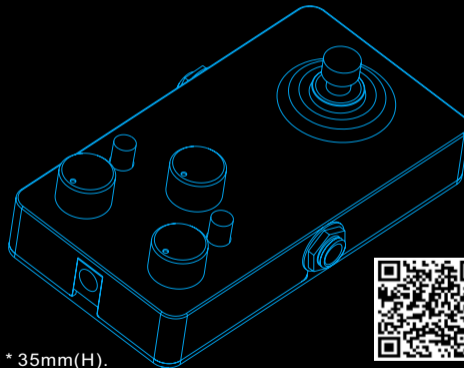
Guitar Effects Pedal Manual

INSANE Distortion

Weight: 200g (Bare metal).

Dimension: 115mm(L) * 66mm(W) * 35mm(H).

COOLMUSIC



www.coolmusic-tech.com